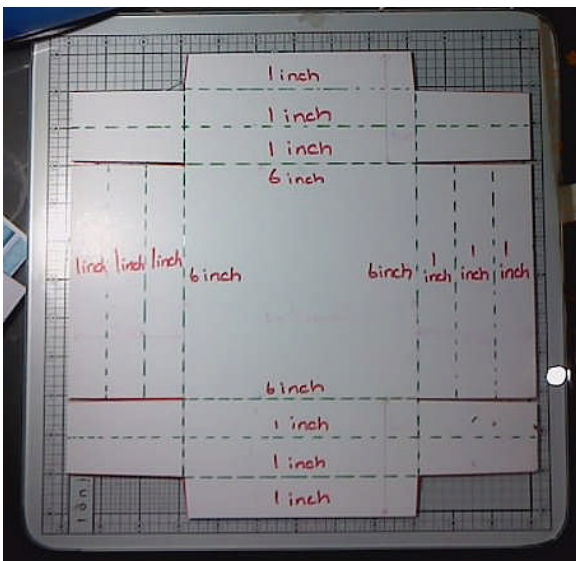


1. Choose a good heavy weight double sided paper to work with. Double sided is ideal so that the inside and the outside coordinate, and then you don't have to use a pretty card to line the inside of the box.

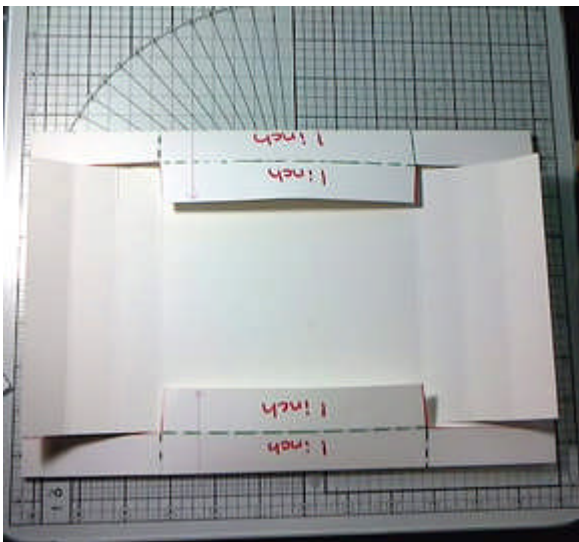
2. 2 sheets of 12x12" from my Stash By K&Co Design by Brenda Walton was used in this project.



3. Work with one sheet at a time, so as not to get confused as to which one had which measurements on it, important if you need to leave your work, and they are 2 sheets of the same design! Laying aside one sheet, proceeded to score at 1", 2", 3", 9", 10", and 11".

4. Then turning the paper 90 degrees, score first the lines full length at 3" and 9", so they crossed the previously scored lines, and form the inside of the box. Then score inside the previously scored lines at 1", 2", 10" and 11", so that they didn't cross the first set of scored lines.

5. CUT the paper where the short score lines meet with the full length score lines, and then remove the outside corners, along the full scored lines, and the intersecting line. Cut these at a slight angle, so that you remove a thin sliver allowing the box to form properly when it's all folded in on itself.

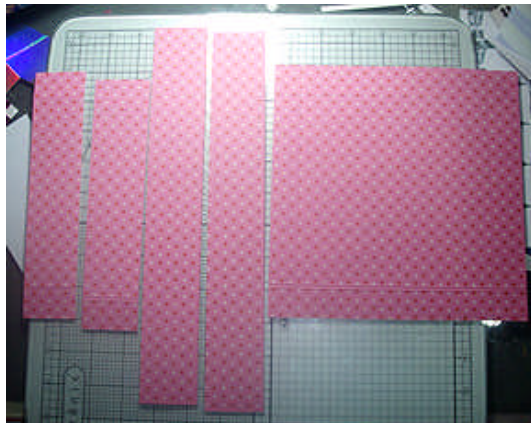


Apply glue or tape between the full length score lines at 2-3" and 9-10". Fold and stick down. Trim if necessary. Then, lift the inside flaps, and apply glue or tape to the inside and stick down.

Apply glue or tape between the full length score lines at 2-3" and 9-10". Fold and stick down. Trim if necessary. Then, lift the inside flaps, and apply glue or tape to the inside and stick down.

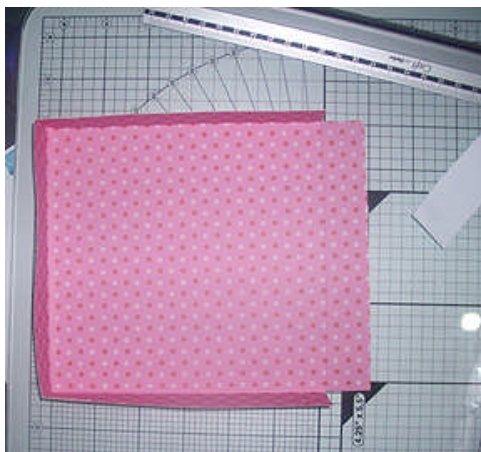


The reason for doing it this way is to provide additional support to the sides of the box, and by sticking the inside flap down, it helps to re-enforce the sides and base of the box. And it looks Pretty!



6. Now we need to bring in the flaps and fold the other side's over the top of it so the base is completed and quite sturdy.
7. Now we really need to concentratethis bit, the measuring, can be tricky as we have to allow space inside the lid, so it closes without squashing the inside base, so some of the measurements for the inside dimensions of the lid are NOT at the inch mark.

8. The second sheet forms the top of the box, and the inside grid, hence the strange measurements. The grid needs to be slightly lower than the base, which is 1 inch deep, so it needs to be $1 \frac{3}{4}$ inches in width, so that when it is folded in half, it will be $\frac{1}{8}$ th inch lower than the top edge of the box.

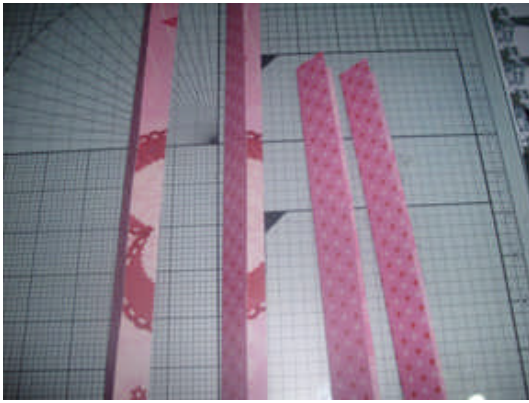


9. Score at $\frac{7}{8}$ ths inch, then score at 7 inch, 8 inch, $9 \frac{3}{4}$ inch, and $11 \frac{1}{2}$ inch, then turn 90 degrees anti clockwise and flip it over onto its back taking the edge closest to you and turning it over so that the edge that was closest to you is now furthest from you, and score at $\frac{7}{8}$ ths inch, 7 inch, $7 \frac{7}{8}$ ths inch, $9 \frac{5}{8}$ ths, $11 \frac{3}{8}$ ths. Hopefully as you score these lines the box lid will become visible, once you can see the box lid, try not to intersect the other score lines, though it doesn't matter too much if you do.

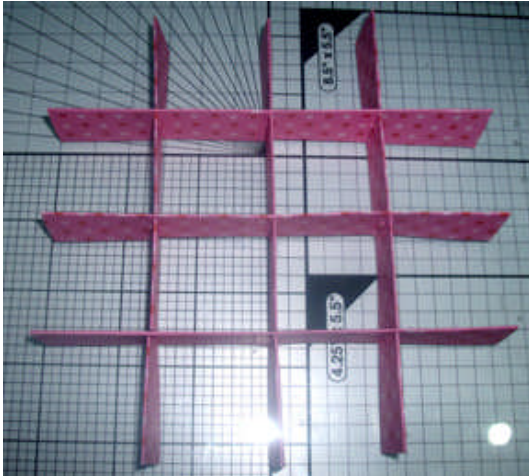


lid, try not to intersect the other score lines, though it doesn't matter too much if you do.

10. Remove the box lid from the sheet, and discard the 2 corners on the 8 inch score line. If you can't remember which one that is, grab a ruler, one of the sides is an inch, the other 3 are $\frac{7}{8}$ ths of an inch. And then fold the tabs in on the front of the box and stick in place. Place the box base face down on the lid, so you can see where it needs to go, apply glue or tape and fold the lid up to meet the box. That way it won't move when you stick it down.



11. Next fold the remaining strips in half, and trim the 2 shorter pieces to $5 \frac{15}{16}$ inches, just under 6 inches, as you have to allow for the added width on the inside of the box from the paper folded inside to form the sides.



12. Split the longer lengths into 4 equal lengths, of $5 \frac{15}{16}$ ths. so now you have 6 equal strips. Before doing anything else, check each strip against the inside of the box, and trim if necessary.

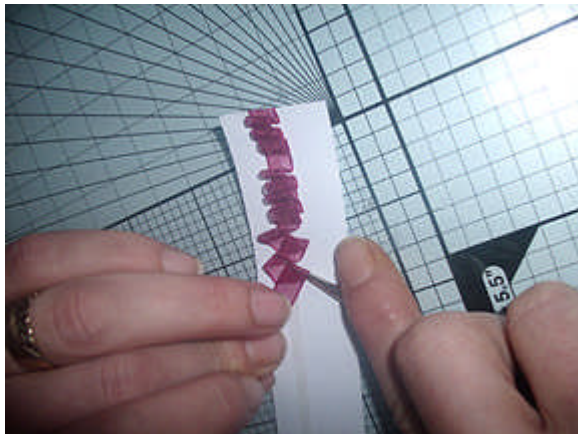


13. Take 3 of the strips, and mark at $1 \frac{3}{8}$ ths, $2 \frac{7}{8}$ ths, and $4 \frac{5}{16}$ ths and cut to just over half way on the open edges, then reverse the process, cutting downwards on the other 3 from the fold line. Make the slits wide so that they will leave room for the card to slot in without the paper/card bowing or becoming deformed. Then slot them into each other to form the grid, and place it inside the box base. If you find that the grid doesn't fit snugly, but is a bit of a squeeze, firstly, try turning the grid 90 degrees and putting it back. You can always trim it to fit.



14. Now to decorate the box: It's entirely up to you how you decorate the box, I used a ribbon, some Lace, a Stamp n Doodle Digi stamp "The Kiss" (which is so cute, have you seen the look on her face? She really isn't sure about this kissing business is she?), and a heart cut from a page of 12x12 designed paper.

15. To ruffle a ribbon, which is a very old technique, you need a long strip minimum of 2



then once you have the ruffle completed, put some "dries clear glue", at the edge of the ruffle.

-3 times the length of the area you want to ruffle it on, and some good strong double sided tape, in the UK we use a red tape, which is super strong.

16. Expose the tape, secure the ribbon to the back of the paper or card, and I use a pokey tool to give me more control, stick a small amount of ribbon down onto the tape, then peel back slightly, and pin the ribbon down backwards on top of the ribbon stuck to the tape using the pokey tool, fold the ribbon back down to the tape, with the tool in place, and press down with your finger. Again pull back slightly, secure it with the pokey tool, and fold it down to the tape, continue until you have gone as far as you want. You can also vary the angle at which you fold the ribbon onto the tape but it does use

a lot more ribbon doing it this way. If you fold back at 45 degrees to the tape, pin it with the tool, and then fold back down and stick, then go to the other side of the tape and repeat the process. Keep doing this until you come to the end of the piece you are working on.

The advantage of using a tape is that you can peel it back, or remove the ribbon completely. If you were to use glue, then you would have to be quick, and the glue could go everywhere. To secure it so that it won't ever come off,